

LT2 Low Maintenance Turf

For environmentally sustainable turfing applications

In many situations maintaining grass to a high standard can become costly both economically and environmentally. Lindum has developed LT2, a low maintenance fine turf, requiring less irrigation, fewer fertiliser inputs and a greatly reduced mowing regime, so grass can still be used as an environmentally sustainable option.

LT2 Low Maintenance is the first turf to incorporate Crested Hairgrass, renowned for its low maintenance qualities, slow growth habit and ability to thrive in dry, low fertility situations. It is designed to tolerate dry periods without intensive irrigation. By using Crested Hairgrass with both hard and creeping red fescue in a turf, LT2 can be used in a variety of sport and landscaping situations.

Lindum LT2 Low Maintenance Turf

Features

- Reduced mowing requirements
- Slow growth habit
- Drought tolerant
- Low fertility requirement
- Fine appearance
- Salt tolerant
- Intensive management: will mow down to 5-6mm
- Extensive management: annual growth only 200mm

Uses

- Areas where reduced mowing and maintenance is required
- Golf course greens and greens surrounds
- Exposed drought prone areas
- Difficult banks
- Highway verges
- Salty or coastal areas
- Green roofs

Grass mixture

- Crested Hairgrass
- Hard Fescue
- Slender Creeping Red Fescue

“We required turf for a scheduled monument site and chose Lindum’s LT2 for its salt tolerance and low maintenance properties. The turf has withstood the minor flooding of brackish water, and the LT2 Grassfelt has worked very well on the steep slopes.”

Karen Morley, Senior Countryside Services Manager, Capita Symonds

LT2 Low Maintenance Grassfelt

LT2 Low Maintenance is available as standard turf or in Grassfelt™ format. Grassfelt™ is a mature soil-less turf grown into a felt made from recycled British textiles, especially designed to retain moisture and give great strength and flexibility. LT2 Grassfelt™ is ideal for true low maintenance situations such as steep banks, sculptured mounds and green roofs.

LT2 Low Maintenance can be left unmown until September/October when it will have achieved a height of about 200mm. It should then be mown in late autumn and the clippings removed to avoid a build up of dead material. This turf will flower in late May – early June producing decorative seed heads. Flowering can be avoided by mowing once in late spring.



Grass mixture

This fine, fescue based mixture contains the following key species:

- Crested Hairgrass (*Koeleria macrantha*) is a native of the UK, commonly found in dry grasslands, especially calcareous and sandy soils, and sand dunes. It produces thin wiry rhizomes, and has a low growth habit.
- Hard Fescue (*Festuca longifolia*) is a drought and salt tolerant fescue with low maintenance requirements.
- Slender Creeping Red Fescue (*Festuca rubra litoralis*) has some drought and salt tolerance with a low maintenance requirement.

Pictured above: LT2 being used around bunkers at Beau Desert Golf Club, Cannock

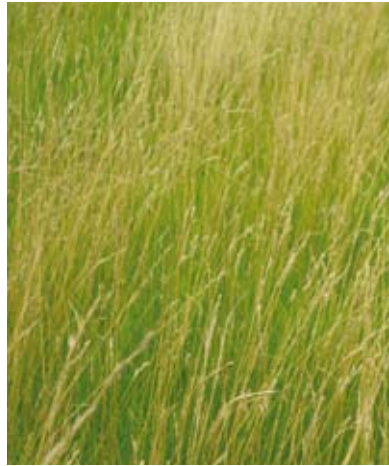
Inset: LT2 Low Maintenance Turf – when managed extensively, with low inputs and left to grow long

“We have left the LT2 to grow long and it has worked really well. We are really pleased with it. It has blended well with the rough and is not too thick in the bottom – ideal for finding the ball.”

Steve Mucklow, Head Greenkeeper, Beau Desert Golf Club



LT2 when mown down to 5-6mm



LT2 when left to grow long

“The LT2 turf is an excellent product. It has stood up to wear on the tee and we only have to mow it once or twice a week compared with at least three times a week for our standard tees, which also generate more clippings.”

John Talbot, Head Greenkeeper, Middlesbrough Golf Club

LT2 SPECIFICATION

SUPPLIER	Lindum Seeded Turf Ltd
PRODUCT	Lindum LT2 Low Maintenance Turf
USES	<p>Areas where reduced mowing and maintenance is required</p> <ul style="list-style-type: none"> • Golf course greens and greens surrounds • Exposed drought prone areas • Difficult banks • Highway verges • Salty or coastal areas • Green roofs
GRASS MIXTURE	<p>Crested Hairgrass Hard Fescue Slender Creeping Red Fescue</p>
ROLL SIZE	<p>Standard turf: Small rolls: 1m² Large rolls: 0.75m or 1.1m x 28m</p> <p>Grassfelt: 1.2m or wider x variable length</p>
WEIGHT	<p>Standard turf: 15-20 kg per m² depending on saturation</p> <p>Grassfelt: 20-25 kg per m² depending on saturation</p>
SPECIFICATION GUIDANCE NOTES	<p>Turf to comply with the TGA (Turfgrass Growers Association) Standard and BS 3969.</p> <p>The turf soil should be of a sandy loam nature with no stones.</p> <p>The grass will be dense, of uniform green colour, free of broadleaved weeds and not visibly affected by pest and disease.</p>

Contact

Lindum Turf, West Grange,
Thorganby, York, YO19 6DJ

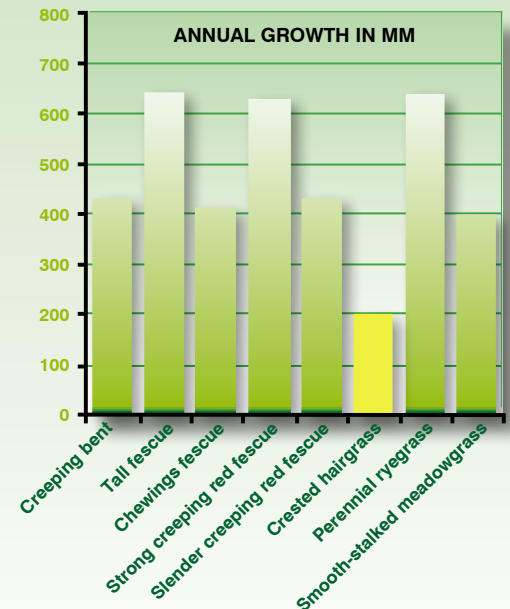
t: 01904 448675
f: 01904 448713
e: lindum@turf.co.uk
w: www.turf.co.uk



Benefits

Reduced mowing

Growth	50-60% lower growing than red fescues or smooth stalked meadow grass Cutting frequency reduced by at least half Reduction in amount of clippings to be removed
Height	100mm – low fertility situations 200mm – more fertile soils If left unmown, attractive seed heads up to 600mm
Ideal for	Inaccessible areas Steep slopes Areas around golf course Highway verges Green roofs



Reduced inputs

Water	The main constituent of LT2, Crested Hairgrass, is a native of dry grasslands, especially calcareous and sandy soils, making the LT2 turf very drought tolerant.
Fertiliser	LT2 prefers low levels of fertility and does better without the application of fertiliser. LT2 is well suited to environmentally sensitive areas and areas of low maintenance.
Fungicide	Disease resistance to red thread, fusarium and dollar spot is excellent, reducing the requirement for fungicide use.
Mowing	The mixture can either be treated extensively with only one or two cuts per year, or treated intensively as a low input fine grass that can be mown down to 5-6mm with a greatly reduced mowing regime.

Other benefits

Appearance	LT2 is a fine grass mixture. The main constituent, Crested Hairgrass, is similar in appearance to Browntop Bent grass (<i>Agrostis Capillaris</i>) with good shoot density.
Salt tolerance	All constituents of LT2 are salt tolerant, especially Crested Hairgrass, making it very suitable for coastal locations.